

# Aquaform 1500

Aquaform 1500 4000K Opal High Efficiency

PRODUCT NUMBER -

1.AF003.D1.O2.840.04.HE.G1

PROJECT NAME -

## PRODUCT DATASHEET

### PRODUCT OVERVIEW

Application

Description Amenity luminaire with DALI control and IP65 rating.

### PHYSICAL PROPERTIES

Dimensions (mm) L x W x H: 1500 x 110 x 75

Weight (kg) 1.9

Material Diffuser: Polycarbonate, Body: Polycarbonate

Colour White

Fixing type Surface Mounted

Fixing description Able to be surface mounted or suspended

IP rating IP65

### PHOTOMETRIC PROPERTIES

Optic Opal

Output mode High Efficiency

Colour temperature (K) 4000

Colour Rendering Index (CRI) 80

Direct lumen output (lm) 7279

Wattage (W) 56

Efficacy (lm/W) 130.0

### ELECTRICAL PROPERTIES

Supply voltage (V) 220-240

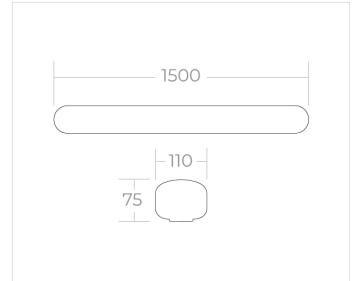
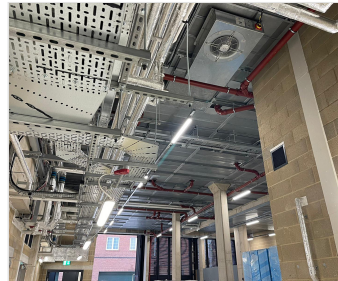
Supply frequency (Hz) 0 / 50 / 60

Current (mA) 1500

Control DALI

Safety class I

LED Life (L70B50) (hrs) 50000



### Terms and Conditions

© 2024 Formation Lighting. All rights reserved. The information in this datasheet is for informational purposes only and may change without notice. Technical data are rated for 25°C ambient temperature with a tolerance of +/- 10% for luminous flux and +/- 150 K for colour temperature. The UGR is calculated from a room with 4H/8H dimensions and reflectance of 20% floor, 50% walls, and 70% ceiling using the SHR 1:1. Use of this datasheet is subject to our terms and conditions, available at [formationlighting.com](http://formationlighting.com)