

Aquaform 1500

Aquaform 1500 4000K Opal High Efficiency Emergency

PRODUCT NUMBER -

1.AF003.D1.O2.840.04.EM.G1

PROJECT NAME -

PRODUCT DATASHEET

PRODUCT OVERVIEW

Application	
Description	Amenity luminaire with DALI control and IP65 rating.

PHYSICAL PROPERTIES

Dimensions (mm) L x W x H:	1500 x 110 x 75
Weight (kg)	2.5
Material	Diffuser: Polycarbonate, Body: Polycarbonate
Colour	White
Fixing type	Surface Mounted
Fixing description	Able to be surface mounted or suspended
IP rating	IP65

PHOTOMETRIC PROPERTIES

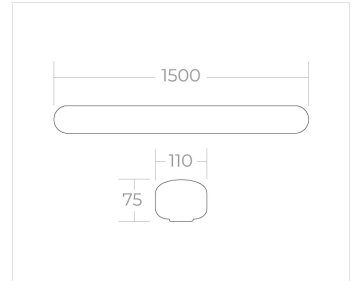
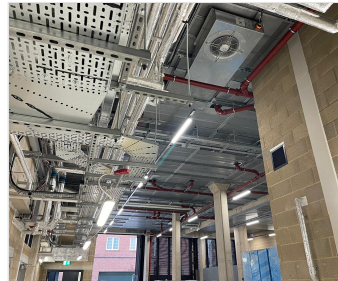
Optic	Opal
Output mode	Emergency
Colour temperature (K)	4000
Colour Rendering Index (CRI)	80
Direct lumen output (lm)	7279
Wattage (W)	56
Efficacy (lm/W)	130.0

ELECTRICAL PROPERTIES

Supply voltage (V)	220-240
Supply frequency (Hz)	0 / 50 / 60
Control	DALI
Safety class	I
LED Life (L70B50) (hrs)	50000

EMERGENCY PROPERTIES

Lumen output (lm)	239
Emergency duration (hrs)	3
Battery size (Ah)	1.5
Battery temperature	50
Battery type	3.2V LiFePO4
Recharge period (hrs)	24



Terms and Conditions

© 2024 Formation Lighting. All rights reserved. The information in this datasheet is for informational purposes only and may change without notice. Technical data are rated for 25°C ambient temperature with a tolerance of +/- 10% for luminous flux and +/- 150 K for colour temperature. The UGR is calculated from a room with 4H/8H dimensions and reflectance of 20% floor, 50% walls, and 70% ceiling using the SHR 1:1. Use of this datasheet is subject to our terms and conditions, available at formationlighting.com